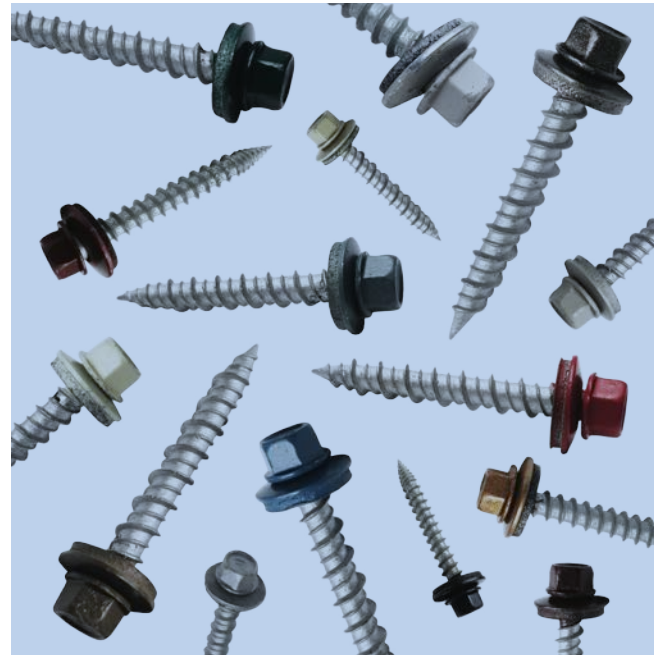
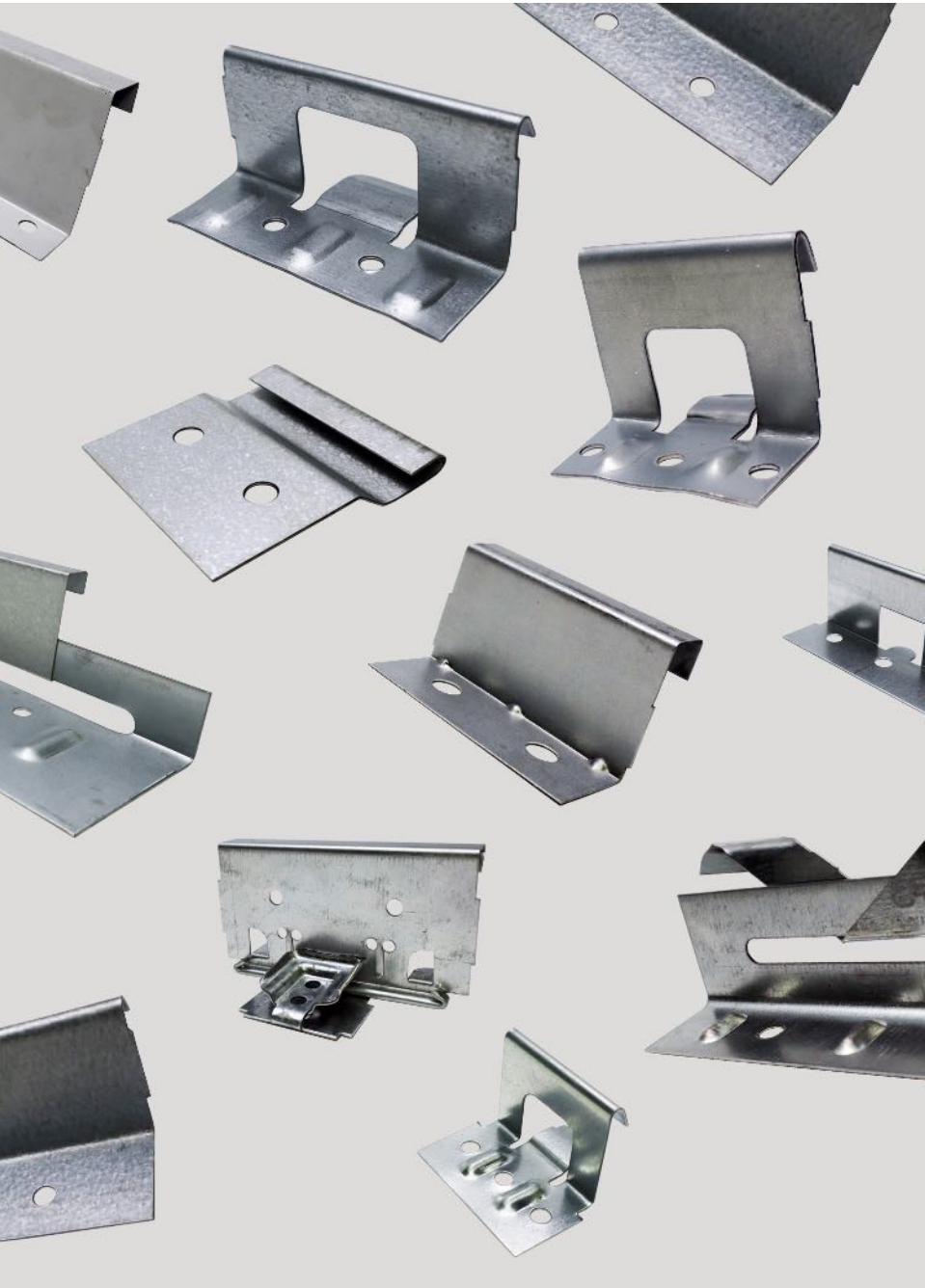


YOUR ONE SOURCE FOR ARCHITECTURAL METAL
ACCESSORIES



**360 Metal Roofing
Supply**

TABLE OF CONTENTS

SNAPLOCK CLIPS	1
MECHANICAL SEAM CLIPS	3
MECHANICAL LOCK FIXED CLIPS	4
WAV PANEL CLIP	4
PANEL TITE SCREWS	5
CLIP SCREWS	6
POP RIVETS	7
BUTYL TAPE, SEALANTS, & PAINT	8
DEKTITE PIPE BOOTS	9
SHARKSKIN UNDERLAYMENT	10
S-5![®] CLAMPS	11
S-5![®] COLORGARD	12

SNAPLOCK CLIPS



1.5" 450 SL CLIP 24GA 2-HOLE

Panel Profile: SMI 1.5" 450 SL

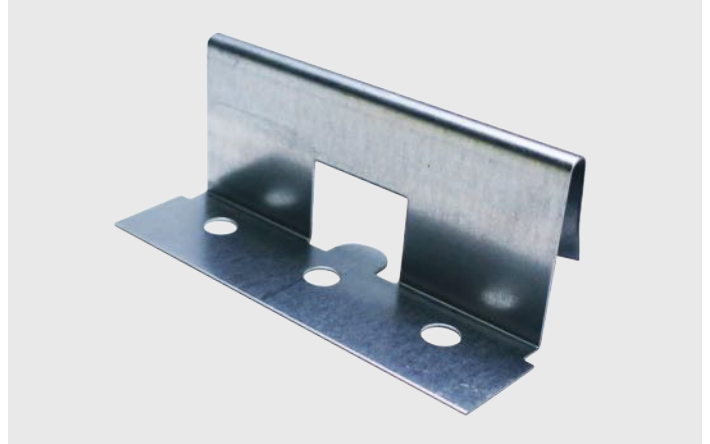
Box Quantity: 800

Steel Engineered: No

Aluminum Engineered: No

Part Number: XCSL15024CNUSM-1

Stainless Steel Part Number: XCSL15024SNUBP



1.5" 450 SL CLIP 24GA 3-HOLE

Panel Profile: SMI 1.5" 450 SL

Box Quantity: 600

Steel Engineered: No

Aluminum Engineered: No

Part Number: XCSL15024CNUSM

Stainless Steel Part Number: XCSL15024SNUSM-1



1.5" 550 SL CLIP 20GA

Panel Profile: SMI 1.5" 550 SL

Box Quantity: 500

Steel Engineered: Yes

Aluminum Engineered: No

Part Number: XCSL15024CSESF

Stainless Steel Part Number: XCSL15024SSESF



1.5" 550 SL CLIP 24GA

Panel Profile: SMI 1.5" 550 SL

Box Quantity: 500

Steel Engineered: No

Aluminum Engineered: No

Part Number: XCSL15024CNUSM-2

Stainless Steel Part Number: XCSL15024SNUSM-2

SNAPLOCK CLIPS (CONT.)



1.5" 550 HD SL 20GA

Panel Profile: SMI 1.5" 550 SL

Box Quantity: 300

Steel Engineered: No

Aluminum Engineered: Yes

Part Number: XCSL15020CAESM

Stainless Steel Part Number: XCSL15020SAESM



1.75" SL UL CLIP 18GA

Panel Profile: SMI 1.75" SL

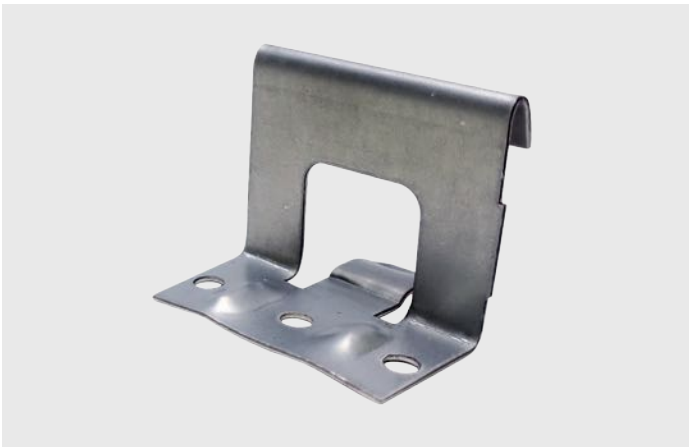
Box Quantity: 250

Steel Engineered: Yes

Aluminum Engineered: Yes

Part Number: XCSL17518CSESF

Stainless Steel Part Number: XCSL17518SSESF



1.75" SL CLIP 18GA

Panel Profile: SMI 1.75" SL

Box Quantity: 400

Steel Engineered: No

Aluminum Engineered: No

Part Number: XCSL17518CNUSM

Stainless Steel Part Number: XCSL15024SNUSM



1.75" ULTRA LENGTH SL 18GA

Panel Profile: SMI 1.75" SL

Box Quantity: 250

Steel Engineered: No

Aluminum Engineered: Yes

Part Number: XCSL17518SNUSM-1

Stainless Steel Part Number: XCSL17518CAESM

MECHANICAL SEAM CLIPS



1.5" MECHANICAL SEAM BUTTERFLY BASE (22GA) + TAB (24GA)

Panel Profile: SMI 1.5" Mechanical Seam

Box Quantity: 200

Steel Engineered: Yes

Aluminum Engineered: No

Part Number: XCMS15B22CSESF (Base), XCMS15T24CSESF (Tab)

Stainless Steel: XCMS15B22SSESF (Base), XCMS15T24SSESF (Tab)



2" MECHANICAL SEAM BUTTERFLY BASE (18GA) + TAB (22GA)

Panel Profile: SMI 2" Mechanical Seam

Box Quantity: 150

Steel Engineered: Yes

Aluminum Engineered: No

Part Number: XCMS20B18CESF (Base), XCMS20T22CSESF (Tab)

Stainless Steel: XCMS20B18SSESF (Base), XCMS20T22SSESF (Tab)



1.5" ML EXPANSION CLIP ASSEMBLED — 24GA TAB, 18GA BASE

Panel Profile: SMI 1.5" Mechanical Seam

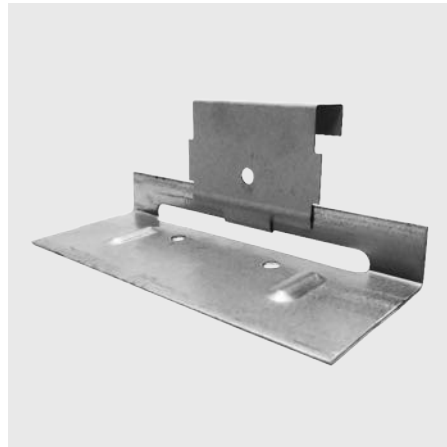
Box Quantity: 250

Steel Engineered: No

Aluminum Engineered: Yes

Part Number: XCMS15024CAESM

Stainless Steel: Available



2" ML EXPANSION CLIP ASSEMBLED — 22GA TAB, 18GA BASE

Panel Profile: SMI 2" Mechanical Seam

Box Quantity: 200

Steel Engineered: No

Aluminum Engineered: Yes

Part Number: XCMS20022CAESM

Stainless Steel: Available (250/box)



2" MECHANICAL OPEN FRAMING FLOAT CLIP

Panel Profile: SMI 2" Mechanical Seam

Box Quantity: 100

Steel Engineered: Yes

Aluminum Engineered: No

Part Number: XCMS20022CSESF

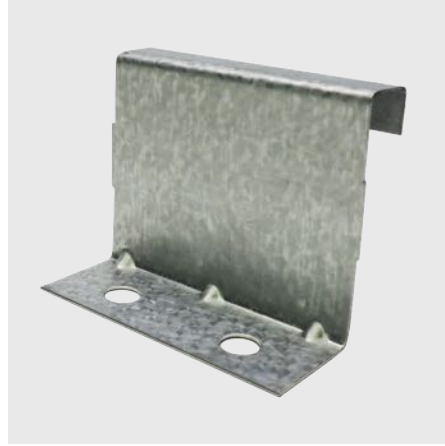
Stainless Steel: XCMS20022SSESF

MECHANICAL LOCK FIXED CLIPS



1" ML FIXED CLIP 24GA & 26GA

Panel Profile: SMI 1" Mechanical Lock
Box Quantity: 1000
Steel Engineered: No
Aluminum Engineered: No
Part Number: XCMF10024CNUSM
Stainless Steel: XCMF10024SNUSM



1.5" ML FIXED CLIP 24GA & 26GA

Panel Profile: SMI 1.5" Mechanical Lock
Box Quantity: 1000
Steel Engineered: No
Aluminum Engineered: No
Part Number: XCMF15024CNUSM
Stainless Steel: XCMF15024SNUSM



2" MECHANICAL FIXED CLIP 24GA

Panel Profile: SMI 2" Mechanical Lock
Box Quantity: 300
Steel Engineered: No
Aluminum Engineered: No
Part Number: XCMF20024CNUSM
Stainless Steel: XCMF20024SNUSM



SMI WAV PANEL CLIP

Panel Profile: NTM WAV Panel
Box Quantity: 1500
Steel Engineered: Yes
Aluminum Engineered: No
Part Number: XCNTWAVCLIPSM

PANEL TITE SCREWS



Bag Quantity: 250

Available Sizes: 3/4", 1", 1-1/2", 2", 2-1/2", 3", 3-1/2"

Description: #10-12 x 1.5" Panel Tite

Substrate: Steel & Stainless

Part Number: XF10HW150WSC(COLOR)TF

Painted to Match

AVAILABLE COLORS ▼



CLIP SCREWS



#10-13 x 1" PANCAKE HEAD SCREW

Bag Quantity: 250
Available Sizes: 1", 1-1/2", 2"
Substrate: Steel & Stainless
Part Number: XF10PC100WSCMLTF
Designed For: Wood
Used in Engineered Systems Over Wood



#10-9 x 1-1/8" ULTRA LOW PROFILE PANCAKE HEAD SCREW

Bag Quantity: 250
Available Sizes: 1-1/8", 1-5/8", 2-1/8"
Substrate: Steel & Stainless
Part Number: XF10U112WSCMLTF
Designed For: Wood



1/4-14 1" PANCAKE HEAD SELF DRILLER

Bag Quantity: 250
Available Sizes: 1"-8"
Substrate: Steel
Part Number: XF14PC100D3MLTF
Designed For: Metal
Used in Engineered Systems Over Metal



#14-13 x 1.5" PANCAKE HEAD SELF DRILLER

Bag Quantity: 250
Available Sizes: 1-1/5"-9"
Substrate: Steel
Part Number: XF14PC150D1CMLTF
Designed For: Metal or Wood

POP RIVETS



Bag Quantity: 250
Available Sizes: #43, #44
Substrate: Stainless Steel
Part Numbers: XPR43(COLOR), XPR44(COLOR)
Painted to Match

AVAILABLE COLORS ▼

- | | | | | | | | |
|---|--|---|---|---|---|---|---|
| 
<i>Terra Cotta</i> | 
<i>Colonial Red</i> | 
<i>Regal Red</i> | 
<i>Burgundy</i> | 
<i>Matte Black</i> | 
<i>Aged Copper</i> | 
<i>Patina Green</i> | 
<i>Hemlock Green</i> |
| 
<i>Hartford Green</i> | 
<i>Evergreen</i> | 
<i>Solar White</i> | 
<i>Regal White</i> | 
<i>Stone White</i> | 
<i>Slate Blue</i> | 
<i>Regal Blue</i> | 
<i>Sandstone</i> |
| 
<i>Ash Gray</i> | 
<i>Dove Gray</i> | 
<i>Slate Gray</i> | 
<i>Charcoal Gray</i> | 
<i>Surrey Beige</i> | 
<i>Sierra Tan</i> | 
<i>Medium Bronze</i> | 
<i>Mansard Brown</i> |
| 
<i>Dark Bronze</i> | 
<i>Silver</i> | 
<i>Copper</i> | 
<i>Champagne</i> | 
<i>Pre-Weathered Galvalume</i> | 
<i>Mill Finish</i> | 
<i>Vintage</i> | |

BUTYL TAPE, SEALANTS, & PAINT



SINGLE BEAD 1/8 x 1 50- FOOT BUTYL CAULK TAPE

Sold Per Each

Part Number: X1080BUT



DOUBLE BEAD 3/16 x 7/8 40-FOOT BUTYL CAULK TAPE

Sold Per Each

Part Number: X7840BUT



NOVAFLEX SEALANT

Sold Per Each

Part Number: XSNF(COLOR)

Available in All Sheffield Metals Colors



AIR DRY KYNAR PAINT PENS

Sold Per Each

Part Number: XPP(COLOR)

Applications: Touch up for cut edges and minor surface scratches

Available in All Sheffield Metals Colors



TOUCH UP SPRAY PAINT CAN

Sold Per Each

Part Number: XSP(COLOR)

Applications: Touch up for minor surfaces and scratches

Available in All Sheffield Metals Colors

DEKTITE PIPE BOOTS



DEKTITE #1-9

Available Sizes

1/4" - 2" (#1), 1-3/4" - 3-1/4" (#2),
1/4" - 4" (#3), 3" - 6" (#4), 4" - 7"
(#5), 5" - 9" (#6), 6" - 11" (#7), 8" - 13"
(#8), 10" - 18" (#9)

Part Numbers

XBP1 (#1), XPB2 (#2), XBP3 (#3), XPB4
(#4), XPB5 (#5), XPB6 (#6), XPB7 (#7),
XPB8 (#8), XPB9 (#9)

Available Colors

Brown, Black, Dark Gray, Light Gray,
White, Dark Green, Light Green, Dark Blue,
Light Blue, Bright Red, Terra Cotta

Sold Per Each



RETROFIT DEKTITE

Sold Per Each

Available Sizes: 3/4" - 2-3/4" | 2" - 7-1/4" | 3-1/4" - 10"

Part Numbers: XPBR1 (3/4" - 2-3/4"), XPBR2 (2" - 7-1/4"),
XPBR3 (3-1/4" - 10")



HIGH TEMP SILICONE DEKTITE

Sold Per Each

Available Sizes: #3, #5, #8

Part Numbers: XPBHT3 (#3), XPBHT5 (#5), XPBHT8 (#8)

SHARKSKIN® ROOF UNDERLAYMENTS



SHARKSKIN COMP UNDERLAYMENT 48" X 250'

Roll Size: 10 squares
Sold Per Each
Part Number: XULSSCOMP004825



SHARKSKIN ULTRA SA UNDERLAYMENT 48" X 125'

Roll Size: 5 squares
Sold Per Each
Part Number: XULSSULRSA48125



SHARKSKIN ULTRA SA UNDERLAYMENT 8" X 125' MINI ROLL

Roll Size: .833 square
Sold Per Each
Part Number: XULSSULMINI08125



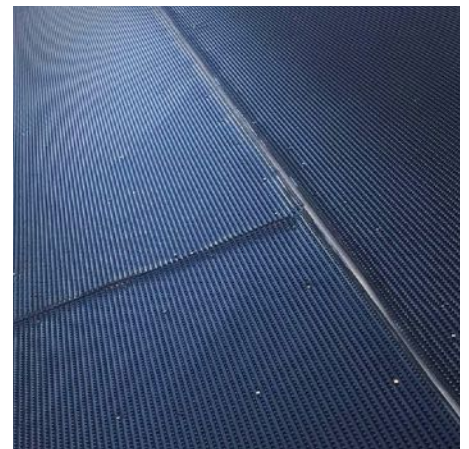
SHARKSKIN ULTRA UNDERLAYMENT 48" X 250'

Roll Size: 10 squares
Sold Per Each
Part Number: XULSSULTRA048250



SHARKSKIN ULTRA RADIANT UNDERLAYMENT 48" X 250'

Roll Size: 10 squares
Sold Per Each
Part Number: XULSSULTRAD048250



SHARKSKIN VENTILATED MAT 48" X 50'

Roll Size: 2 squares
Sold Per Each
Part Number: XULSSVENMAT48050

S-5!® CLAMPS



S-5-E CLAMP

Description: (2) 3/8" x .5" setscrews, (1) M8 x 16mm bolt
Minor Box Quantity: 60
Master Box Quantity: 300
Designed For: Traditional double-folded standing seam roofs
Compatible With: All metals except copper



S-5-N CLAMP

Description: (2) 3/8" x .8" setscrews, (1) M8 x 16mm bolt,
 (1) N insert
Minor Box Quantity: 30
Master Box Quantity: 150
Designed For: Nail-flange SSR profiles (<1" in height)



S-5-S CLAMP

Description: (2) 3/8" x .8" setscrews,
 (1) M8 x 16mm bolt
Minor Box Quantity: 30
Master Box Quantity: 150
Designed For: Snap-together profiles



S-5-U CLAMP

Description: (2) 3/8" x .8" setscrews,
 (1) M8 x 16mm bolt
Minor Box Quantity: 30
Master Box Quantity: 150
Designed For: Vertically-oriented seams
**Fits 85% of standing seam profiles
 manufactured in North America**



S-5-V CLAMP

Description: (2) 3/8" x .8" setscrews,
 (1) M8 x 16mm bolt
Minor Box Quantity: 30
Master Box Quantity: 150
Designed For: Vertical machine-
 folded seams
**Fits all the same vertically oriented
 seams as the S-5-U**

S-5![®] COLORGARD



COLORGARD UNPUNCHED

ColorGard is manufactured from mill-finished, aircraft quality aluminum. It comes in 8-foot long sections. Splices are included with ColorGard for adjacent sections. For use with S-5![®] heavy duty clamps.

Box Quantity: (12) 8' rails



VERSACLIP

VersaClip makes installation easy, as it simply slides on the ColorGard crossmember. It can be used with all S-5! clamps.

Minor Box Quantity: 100
Master Box Quantity: 500



SNOCLIP II

SnoClip[™] is added to retard the migration of snow and ice beneath the crossmembers.

Minor Box Quantity: 55
Master Box Quantity: 220



SNOCLIP III

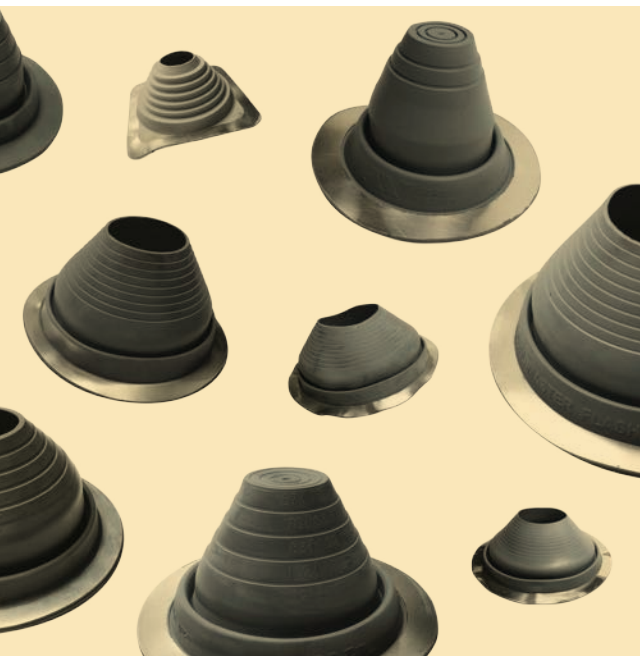
SnoClip[™] is added to retard the migration of snow and ice beneath the crossmembers.

Minor Box Quantity: 35
Master Box Quantity: 140

Note: A full line of S-5! products is available.

AUSTIN, TX

512.351.9245



360MetalRoofingSupply.com

